

## Ellam XT - Drawings

The following partlist is only for one speaker and documents how I build the speaker.

**Remember that the frontplate has to be mirrored in order to make a pair!**

The dimension of the final cabinet is (HxWxD) 300x210x280 giving an internal volume of 10.9 liters as specified by Troels.

All dimensions are given in millimeters.

Partlist:

| Quantity | Description                    | Dimension (HxWxD) |
|----------|--------------------------------|-------------------|
| 1        | Front plate                    | 300x210x19        |
| 2        | Sides                          | 262x261x19        |
| 2        | Top/bottom                     | 261x210x19        |
| 1        | Back plate                     | 262x172x19        |
| 1        | Bracing                        | 172x30x19         |
| 1        | Reenforcement plate, bass port | 70x90x19          |

Only drawings of the front and back plates are given in the following as the dimensions of the other plates are trivial.

Back side/bass port:

The used bass port is a Danish VA waste pipe used at e.g. a kitchen sink. The outer diameter of the tube is 50 mm and the internal diameter is 46 mm.

In order to produce the bass port hole you will probably need the following tools:

- Forstner auger bit Ø50 mm
- Forstner auger bit Ø35 mm
- Fillet bit r12,6 mm

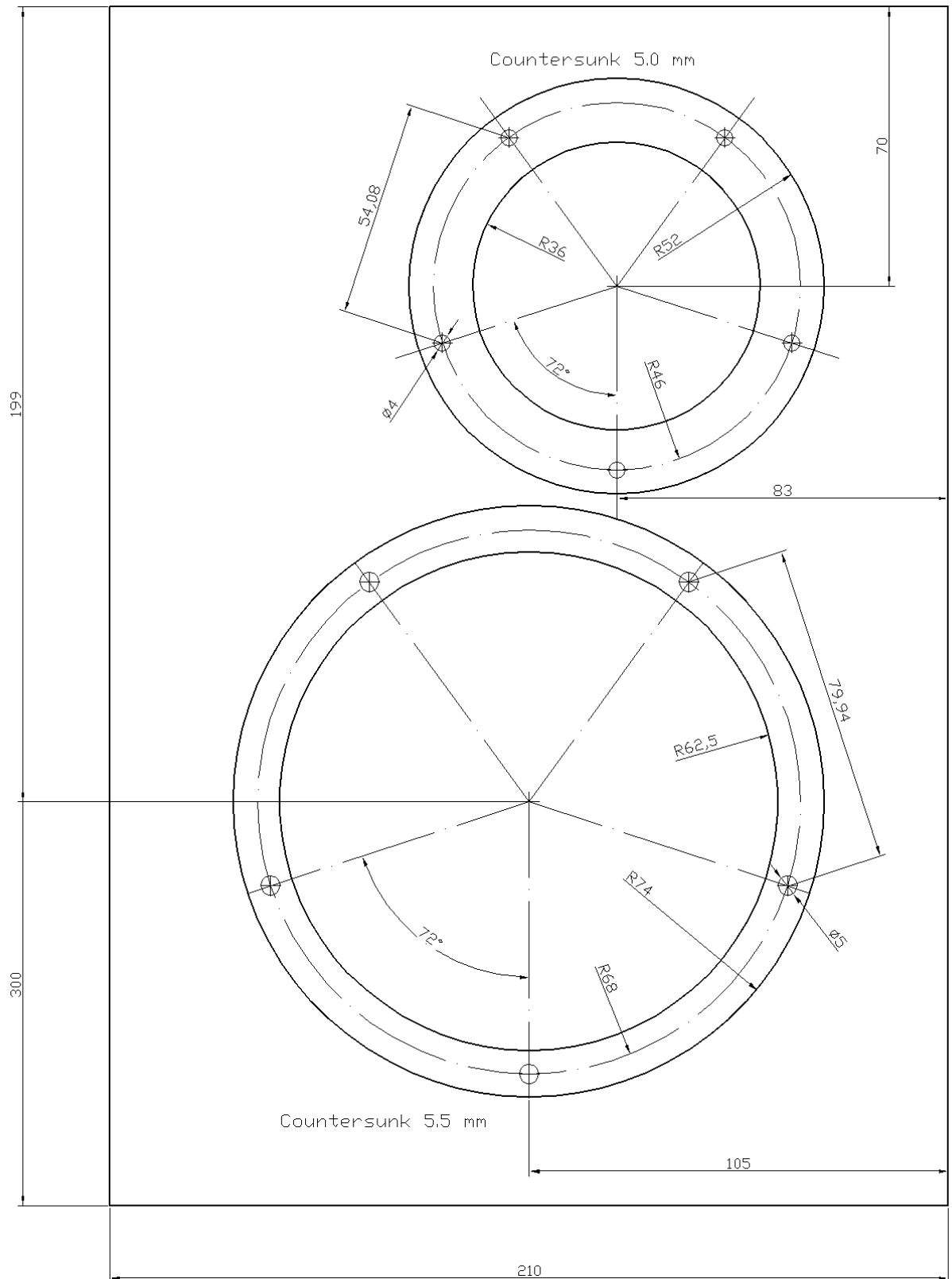


Figure 1: The frontplate

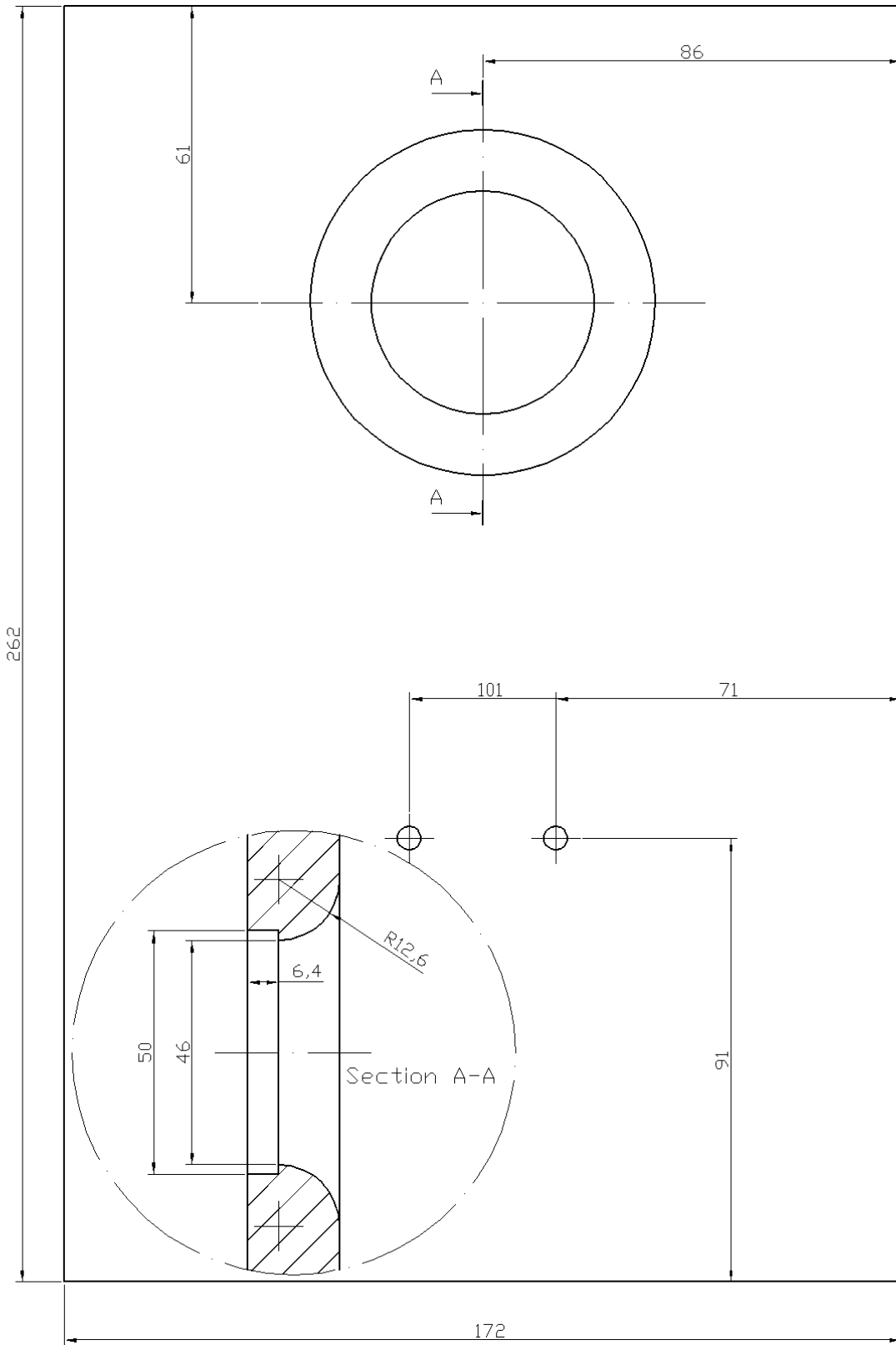


Figure 2: The back plate (Position of section A-A is a bit alternative)